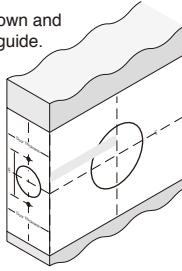


Installation Instructions for Knob/Levers Lockset

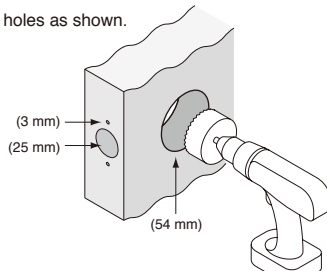
Step 1.

- Mark the Door as shown and use the template as guide.



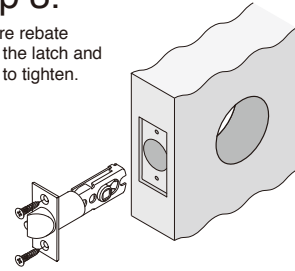
Step 2.

- Drill the holes as shown.



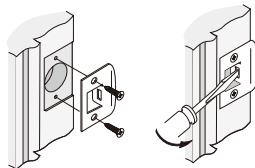
Step 3.

- Prepare rebate
- Install the latch and screw to tighten.



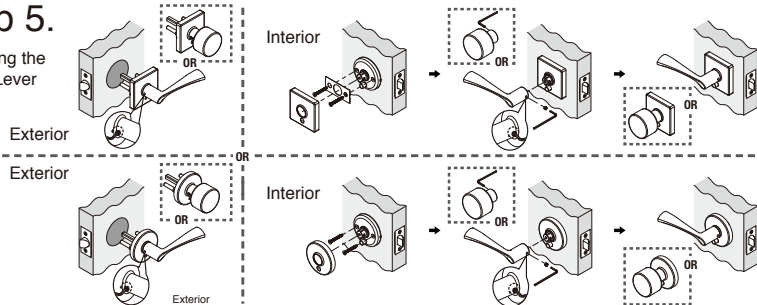
Step 4.

- Prepare rebate
- Install the strike and screw to tighten.



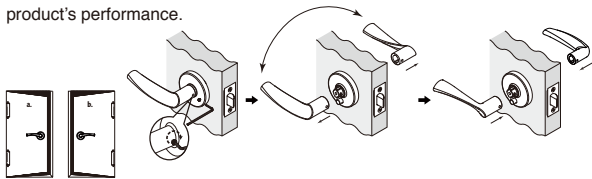
Step 5.

- Installing the Knob/Lever

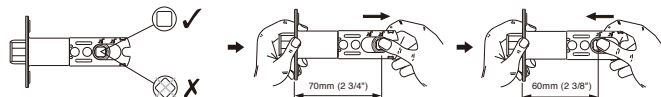


Switching the Handles (if Required)

Note: Levers installed in reverse will not affect the product's performance.



Adjustable Latch



NOTE: Carefully follow these instructions when installing. Screws to be tightened to a recommended 2.5Nm torque.



Mark centre-line of latch hole

Mark centre-line of latch hole

FOLD HERE

Fit here on door edge

54mm hole

BACKSET 60mm (2 3/8")

BACKSET 70mm (2 3/4")

Fit here on door edge

TRADEPRO
BY GAINSBOROUGH

Installation template for knob/lever lockset

Gainsborough Hardware Industries Limited,
Melbourne, Australia. A.B.N. 25 004 792 269
www.gainsboroughhardware.com.au

LGP-YV00Y12-00
MAR '15

